



**Department of
Environmental
Conservation**

Climate Justice Working Group Meeting

February 9, 2023

Meeting Procedures

- Meeting rooms will be muted to reduce noise
- Working Group members should raise their hand to indicate they would like to speak
- Please state your name before speaking for transcript purposes





Roll Call



Agenda for February 9, 2023

- Methodological Review and Tableau Workshop
- Timeline Review
- Items of Interest
- Next Steps



Methodology

Methodological items to review

- Proportion of DACs (35%) review
- Multiply versus add component scores
- Weighting vulnerability factors or indicators for resiliency + representation of black and Latino groups
- Check to ensure we're not including rich communities

Percent designated a DAC

Regional comparison – 35% designated versus 25% designated

Region	Percentages			Count of Census Tracts		
	35% Scenario	25% Scenario	Difference	35% Scenario	25% Scenario	Difference
New York City	45%	31%	-14%	966	680	-286
Mid-Hudson	45%	34%	-11%	241	180	-61
Western NY	32%	24%	-8%	117	89	-28
Finger Lakes	35%	24%	-11%	109	74	-35
Central NY	36%	24%	-12%	79	53	-26
Long Island	12%	7%	-5%	72	41	-31
Capital Region	22%	17%	-5%	61	48	-13
Southern Tier	18%	9%	-9%	31	16	-15
Mohawk Valley	19%	13%	-6%	28	19	-9
North Country	15%	6%	-9%	17	7	-10
Total	35%	25%	-10%	1,721	1,207	-514

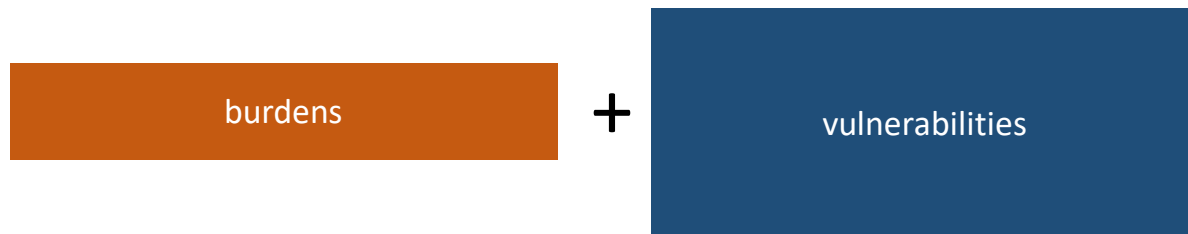


Methodological items to review

- Proportion of DACs (35%) review
- Multiply versus add component scores
- Weighting vulnerability factors or indicators for resiliency + representation of black and Latino groups
- Check to ensure we're not including rich communities



What multiplying vs adding means



Adding component scores would allow you to weight component scores.



Multiplying component scores doesn't let you do this, but it does align with what others have done and the theory that burdens and vulnerabilities exacerbate one another.

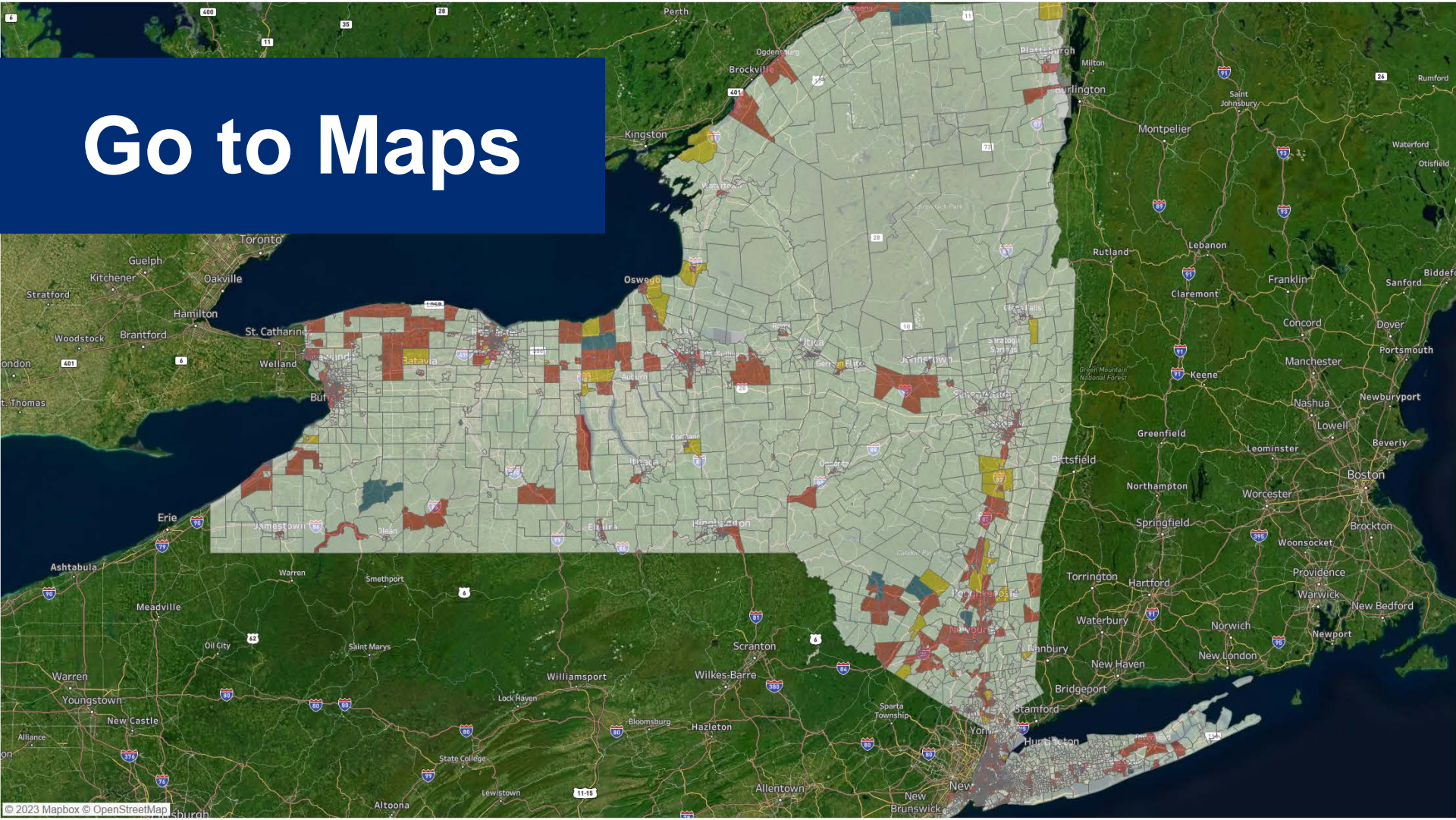
Do we multiply component scores or add them?

Regional comparison – Multiply component scores (current scenario) versus add component scores

Region	Percentages			Count of Census Tracts		
	Multiply Scenario	Addition Scenario	Difference	Multiply Scenario	Addition Scenario	Difference
New York City	45%	44%	-1%	966	950	-16
Mid-Hudson	45%	42%	-3%	241	225	-16
Western NY	32%	34%	2%	117	125	8
Finger Lakes	35%	35%	0%	109	109	0
Central NY	36%	34%	-2%	79	74	-5
Long Island	12%	14%	2%	72	85	13
Capital Region	22%	21%	-1%	61	60	-1
Southern Tier	18%	22%	4%	31	38	7
Mohawk Valley	19%	26%	7%	28	38	10
North Country	15%	14%	-1%	17	16	-1
Grand Total	35%	35%	0%	1,721	1,720	-1



Go to Maps



Methodological items to review

- Proportion of DACs (35%) review
- Multiply versus add component scores
- Weighting vulnerability factors or indicators for resiliency + representation of black and Latino groups
- Check to ensure we're not including rich communities

1

Environmental Burdens and Climate Change Risks: Draft Indicators

What factors/indicators speak to resiliency?

Potential Pollution Exposures

- Vehicle traffic density
- Diesel truck and bus traffic
- Particulate Matter (PM2.5)
- Benzene concentration
- Wastewater discharge

Land use and facilities associated with historical discrimination or disinvestment

- Remediation Sites (e.g., NPL Superfund or State Superfund/Class II sites)
- Regulated Management Plan (chemical) sites
- Major oil storage facilities (incl. airports)
- Power generation facilities
- Active landfills
- Municipal waste combustors
- Scrap metal processors
- Industrial/manufacturing/mining land use (zoning)
- Housing vacancy rate

Potential Climate Change Risks

- Extreme heat projections (>90° days in 2050)
- Flooding in coastal and tidally influenced areas (projected)
- Flooding in inland areas (projected)
- Low vegetative cover
- Agricultural land
- Driving time to hospitals or urgent/critical care



1

Population Characteristics and Health Vulnerabilities: Draft Indicators

What factors/indicators speak to resiliency?

Income, Education & Employment

- Pct <80% Area Median Income
- Pct <100% of Federal Poverty Line
- Pct without Bachelor's Degree
- Unemployment rate
- Pct Single-parent households

Within this factor, both income metrics have 2x weight

Race, Ethnicity & Language

- Pct Latino/a or Hispanic
- Pct Black or African American
- Pct Asian
- Pct Native American or Indigenous
- Limited English Proficiency
- Historical redlining score

Within this factor, Pct Latino/a and Pct Black have 2x weight

Health Impacts & Sensitivities

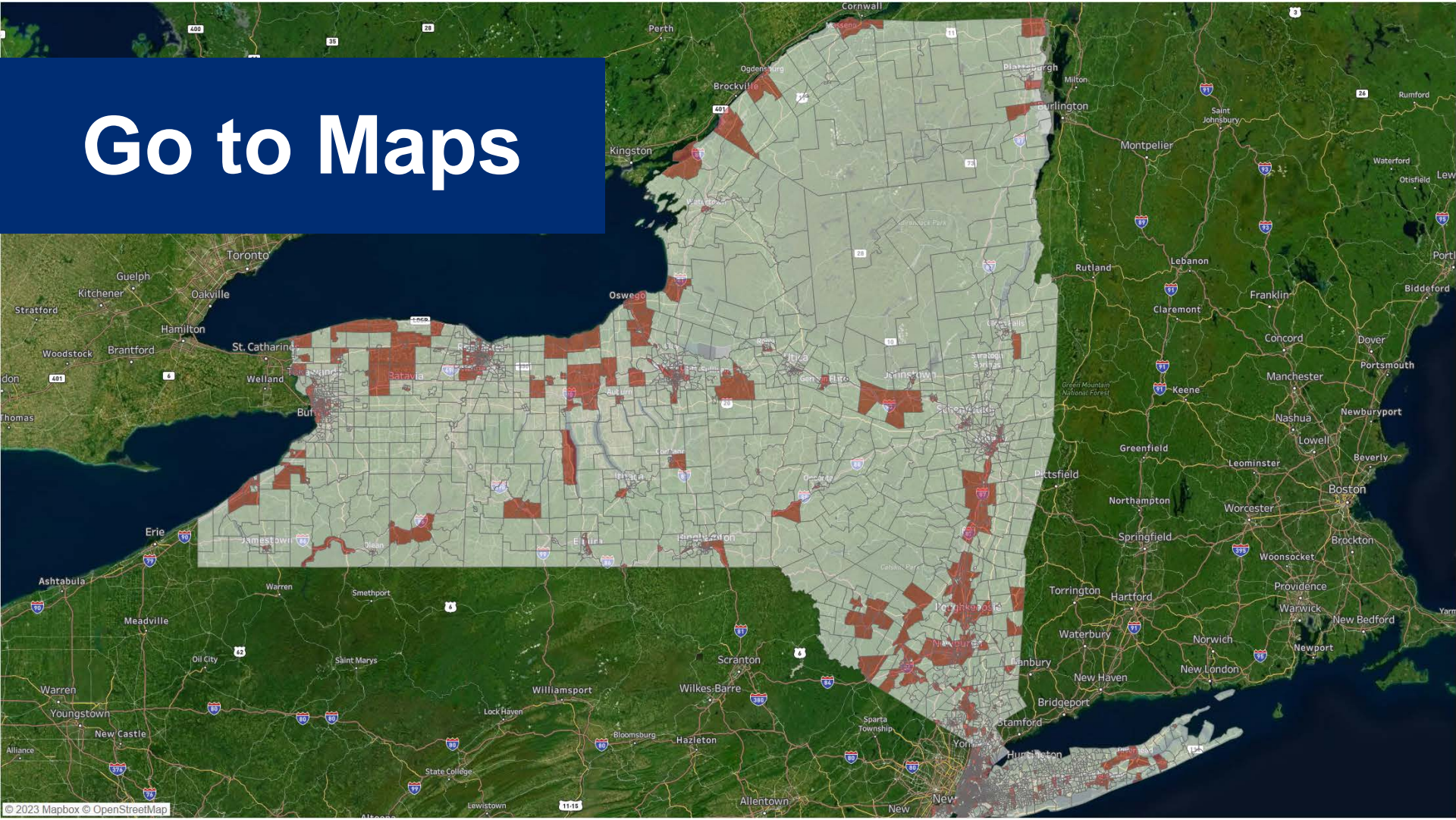
- Asthma ED visits
- COPD ED visits
- Heart attack (MI) hospitalization
- Premature Deaths
- Low Birthweight
- Pct without Health Insurance
- Pct with Disabilities
- Pct Adults age 65+

Housing, Energy, Communications

- Pct Renter-Occupied Homes
- Housing cost burden (rental costs)
- Energy Poverty / Cost Burden
- Manufactured homes
- Homes built before 1960
- Pct without Internet (home or cellular)



Go to Maps



Next steps

Ongoing Assessment of DAC Definition

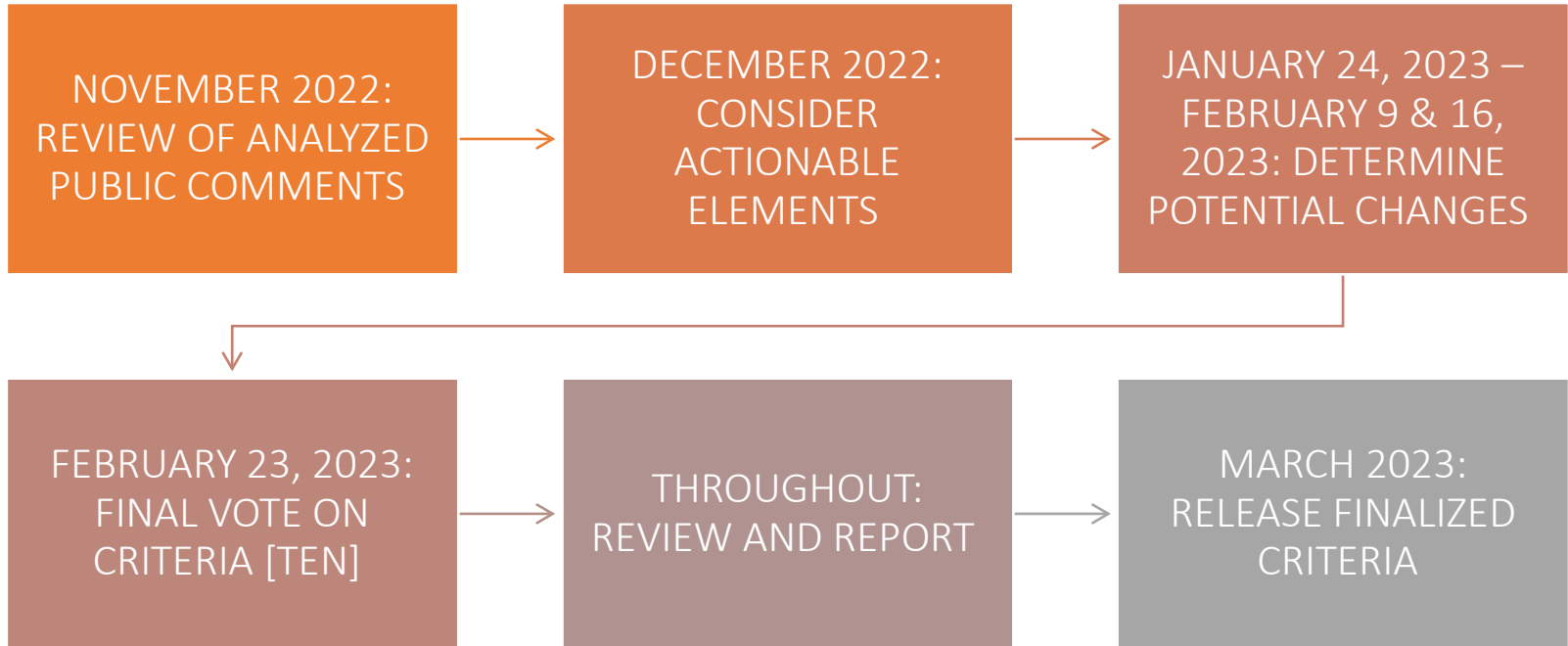
- Monitoring developments in other regions
- Updating existing indicators
- Identifying potential new indicators, including the prioritized indicators from public comments
- Tracking DAC criteria with an eye to identifying unintended consequences
- Anything else?

“The group will meet no less than annually to review the criteria and methods used to identify disadvantaged communities and may modify such methods to incorporate new data and scientific findings. The climate justice working group shall review identities of disadvantaged communities and modify such identities as needed.”



Workplan and Timeline

Revised Finalizing the DAC Criteria Timeline & Workplan





Next Steps

Questions?

