



**Department of  
Environmental  
Conservation**

# **Climate Justice Working Group Meeting**

**February 16, 2023**

# Meeting Procedures

- Meeting rooms will be muted to reduce noise
- Working Group members should raise their hand to indicate they would like to speak
- Please state your name before speaking for transcript purposes





# Roll Call



# Agenda for February 16, 2023

- Roll Call
- Methodological Review
- Timeline
- Next Steps



# Methodology

# Methodological items to review



## Proportion of DACs (35%) review

Working group members discussed and chose to stay with 35% to ensure criteria does not miss too many disadvantaged communities



## Multiply versus add component scores

WG members asked for population statistics to enable comparison between scenarios. We will review and discuss today

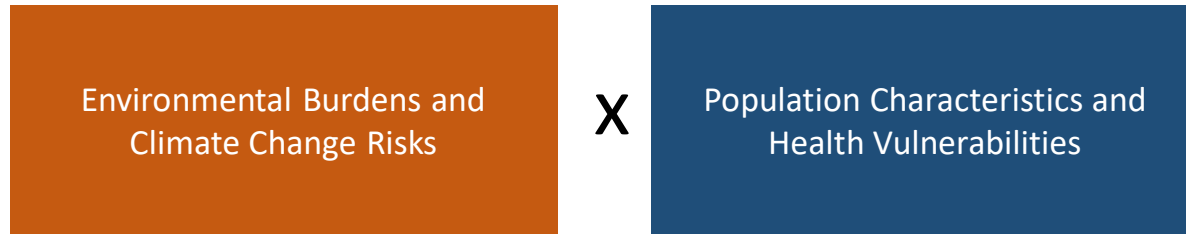
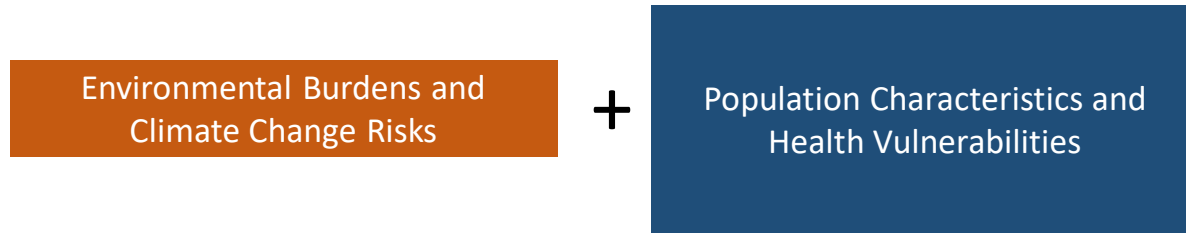


## Weighting vulnerability factors or indicators for resiliency + representation of black and Latino groups

Will review and discuss today



# What multiplying vs adding means



Adding component scores would allow you to weight component scores.

Multiplying component scores doesn't let you do this, but it does align with what others have done and the theory that burdens and vulnerabilities exacerbate one another.

## 1

# Environmental Burdens and Climate Change Risks: Draft Indicators

What factors/indicators speak to resiliency?

## Potential Pollution Exposures

- Vehicle traffic density
- Diesel truck and bus traffic
- Particulate Matter (PM2.5)
- Benzene concentration
- Wastewater discharge

## Land use and facilities associated with historical discrimination or disinvestment

- Remediation Sites (e.g., NPL Superfund or State Superfund/Class II sites)
- Regulated Management Plan (chemical) sites
- Major oil storage facilities (incl. airports)
- Power generation facilities
- Active landfills
- Municipal waste combustors
- Scrap metal processors
- Industrial/manufacturing/mining land use (zoning)
- Housing vacancy rate

## Potential Climate Change Risks

- Extreme heat projections (>90° days in 2050)
- Flooding in coastal and tidally influenced areas (projected)
- Flooding in inland areas (projected)
- Low vegetative cover
- Agricultural land
- Driving time to hospitals or urgent/critical care





## 1

# Population Characteristics and Health Vulnerabilities: Draft Indicators

What factors/indicators speak to resiliency?

## Income, Education & Employment

- Pct <80% Area Median Income
- Pct <100% of Federal Poverty Line
- Pct without Bachelor's Degree
- Unemployment rate
- Pct Single-parent households

Within this factor, both income metrics have 2x weight

## Race, Ethnicity & Language

- Pct Latino/a or Hispanic
- Pct Black or African American
- Pct Asian
- Pct Native American or Indigenous
- Limited English Proficiency
- Historical redlining score

Within this factor, Pct Latino/a and Pct Black have 2x weight

## Health Impacts & Sensitivities

- Asthma ED visits
- COPD ED visits
- Heart attack (MI) hospitalization
- Premature Deaths
- Low Birthweight
- Pct without Health Insurance
- Pct with Disabilities
- Pct Adults age 65+

## Housing, Energy, Communications

- Pct Renter-Occupied Homes
- Housing cost burden (rental costs)
- Energy Poverty / Cost Burden
- Manufactured homes
- Homes built before 1960
- Pct without Internet (home or cellular)



# Some scenarios to get us started

S1 - Draft Criteria

Our main comparison scenario

Adding Component  
Scores

Allows us to test whether we want to add component scores, which will let us weight component scores if we want to

Adding Components &  
Climate at 1

Allows us to test the combination of weighting of the climate factor less & adding component scores

Multiplying Components  
& Climate at 1

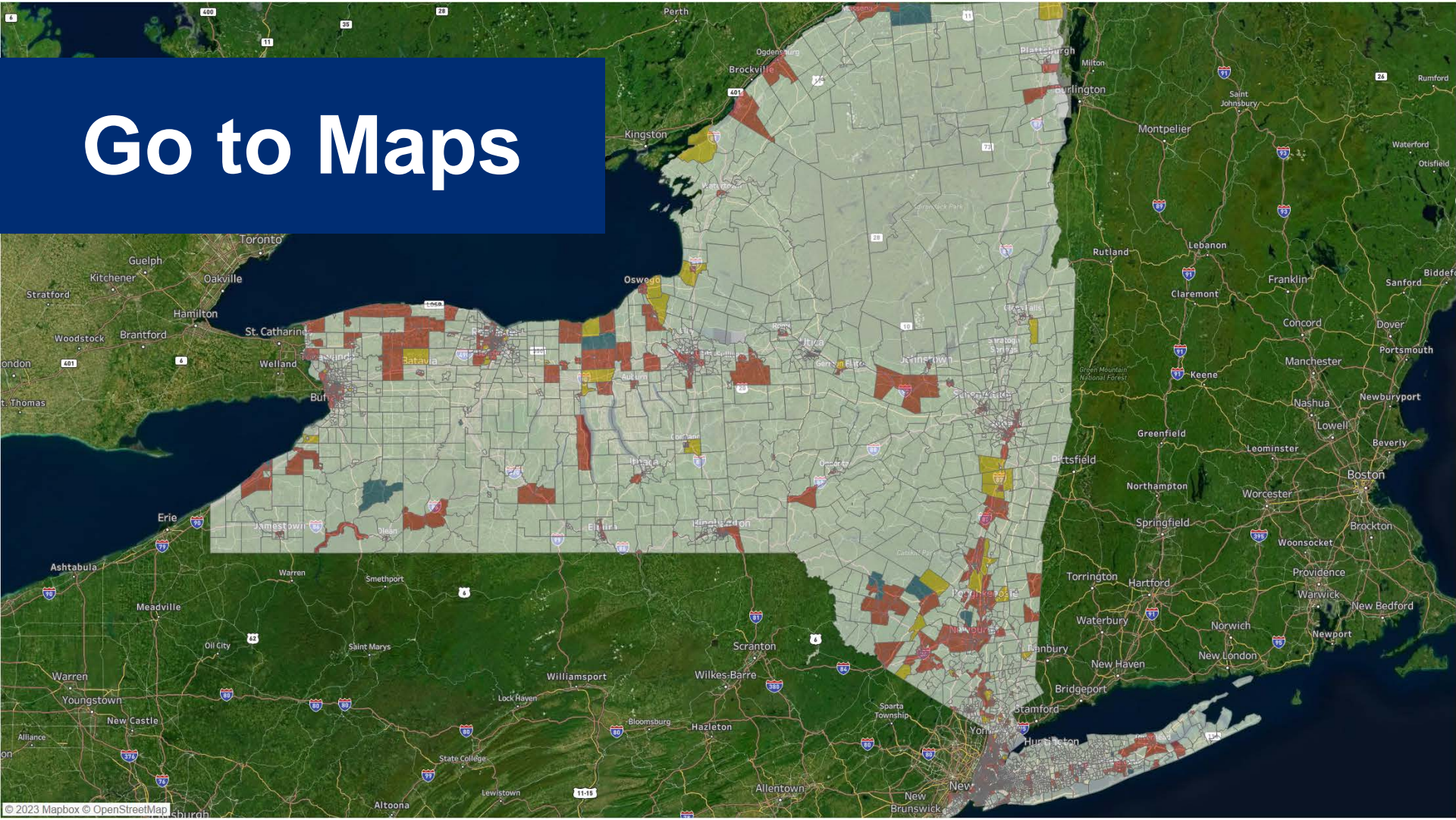
Allows us to test the weighting of the climate factor less

# Statistics for the four starting scenarios

There are some small differences between the scenarios.

	S1 - Draft Criteria	Adding Component Scores	Adding Components & Climate at 1	Multiplying Components & Climate at 1	Population Total
<80% Area Median Income	61%	63%	63%	62%	45%
<100% Federal Poverty Level	23%	24%	24%	23%	14%
Black/African American	29%	31%	31%	30%	18%
Latino/a	31%	32%	32%	31%	18%
Asian	8%	8%	8%	8%	9%
Burden Score	38	33	33	34	30
Vulnerability Score	62	63	63	62	48

# Go to Maps



**Are you ready for  
a vote next week?**



**Department of  
Environmental  
Conservation**

# Ongoing Assessment of DAC Definition

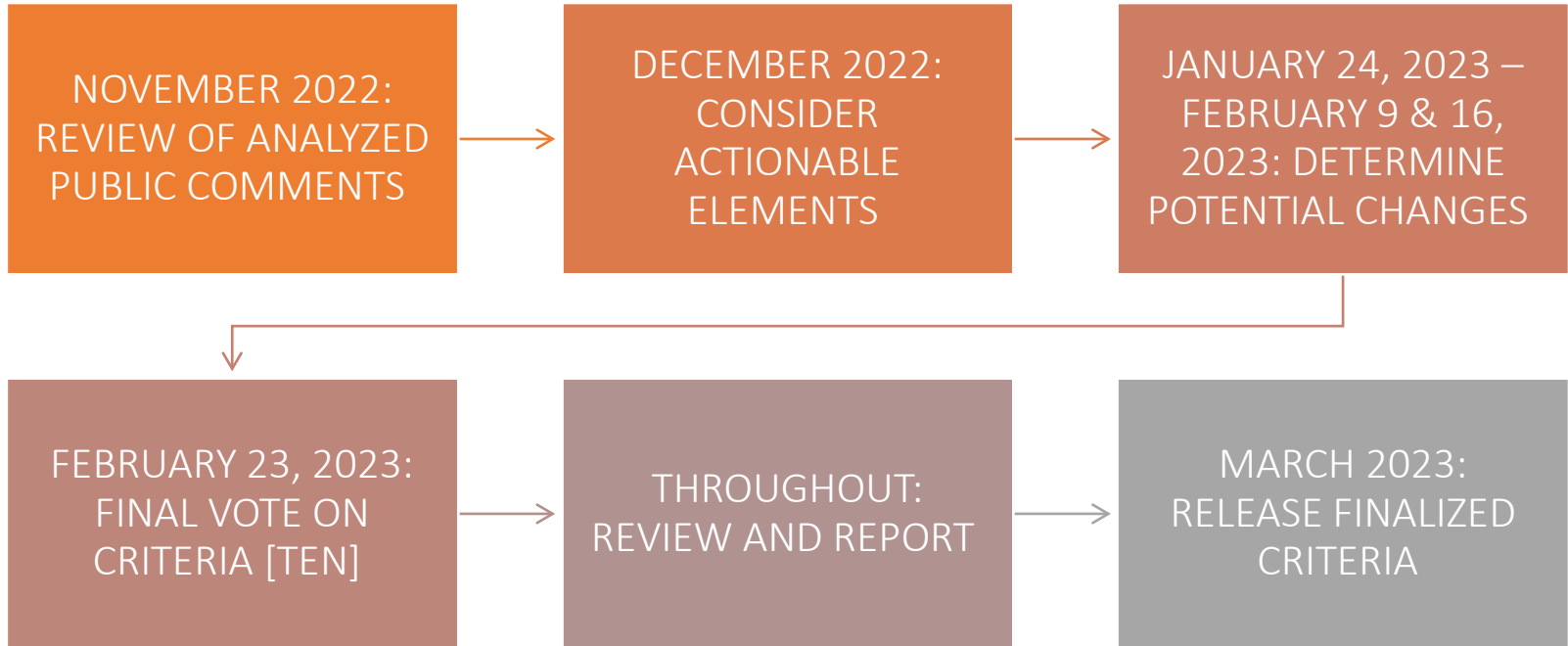
- Monitoring developments in other regions
- Updating existing indicators
- Identifying potential new indicators, including the prioritized indicators from public comments
- Tracking DAC criteria with an eye to identifying unintended consequences
- Anything else?

*“The group will meet no less than annually to review the criteria and methods used to identify disadvantaged communities and may modify such methods to incorporate new data and scientific findings. The climate justice working group shall review identities of disadvantaged communities and modify such identities as needed.”*



# Workplan and Timeline

# Revised Finalizing the DAC Criteria Timeline & Workplan







# Items of Interest



# Next Steps

Questions?

## 1

# Environmental Burdens and Climate Change Risks: Draft Indicators

What factors/indicators speak to resiliency?

## Potential Pollution Exposures

- Vehicle traffic density
- Diesel truck and bus traffic
- Particulate Matter (PM2.5)
- Benzene concentration
- Wastewater discharge

## Land use and facilities associated with historical discrimination or disinvestment

- Remediation Sites (e.g., NPL Superfund or State Superfund/Class II sites)
- Regulated Management Plan (chemical) sites
- Major oil storage facilities (incl. airports)
- Power generation facilities
- Active landfills
- Municipal waste combustors
- Scrap metal processors
- Industrial/manufacturing/mining land use (zoning)
- Housing vacancy rate

## Potential Climate Change Risks

- Extreme heat projections (>90° days in 2050)
- Flooding in coastal and tidally influenced areas (projected)
- Flooding in inland areas (projected)
- Low vegetative cover
- Agricultural land
- Driving time to hospitals or urgent/critical care



## 1

# Population Characteristics and Health Vulnerabilities: Draft Indicators

What factors/indicators speak to resiliency?

## Income, Education & Employment

- Pct <80% Area Median Income
- Pct <100% of Federal Poverty Line
- Pct without Bachelor's Degree
- Unemployment rate
- Pct Single-parent households

Within this factor, both income metrics have 2x weight

## Race, Ethnicity & Language

- Pct Latino/a or Hispanic
- Pct Black or African American
- Pct Asian
- Pct Native American or Indigenous
- Limited English Proficiency
- Historical redlining score

Within this factor, Pct Latino/a and Pct Black have 2x weight

## Health Impacts & Sensitivities

- Asthma ED visits
- COPD ED visits
- Heart attack (MI) hospitalization
- Premature Deaths
- Low Birthweight
- Pct without Health Insurance
- Pct with Disabilities
- Pct Adults age 65+

## Housing, Energy, Communications

- Pct Renter-Occupied Homes
- Housing cost burden (rental costs)
- Energy Poverty / Cost Burden
- Manufactured homes
- Homes built before 1960
- Pct without Internet (home or cellular)

