



**Department of  
Environmental  
Conservation**

# **Climate Justice Working Group**


**Wednesday April 21, 2021**

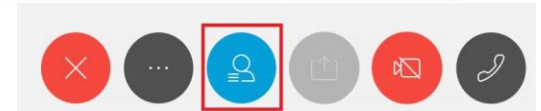
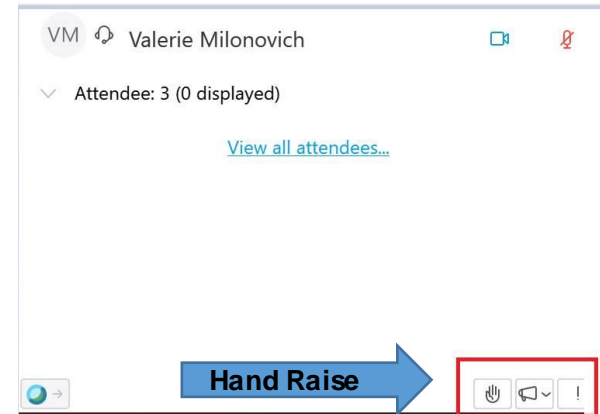
# Meeting Procedures

## Before beginning, a few reminders to ensure a smooth discussion:

- Working Group Members should be on mute if not speaking.
  - If using phone for audio, please tap the phone mute button.
  - If using computer for audio, please click the mute button on the computer screen (1<sup>st</sup> visual).
- Video is encouraged for Working Group members, particularly when speaking.
- In the event of a question or comment, please use the hand raise function (2<sup>nd</sup> visual). Click the participant panel button (3<sup>rd</sup> visual) for the hand raise function. Rosa or Alanah will call on members individually, at which time please unmute.



You'll see  when your microphone is muted



# Welcome and Roll Call



# April 21 Agenda

- > Welcome and Roll Call
- > Business Items
  - > Meet Sameer
  - > CAC Scoping Plan
  - > Timeline
- > Review Approach to Date
- > Critical Decisions – *with maps*
- > Next Steps



# Business Items

- > Please send Rosa & Alex your groundtruthing list!
- > Approval of Minutes
- > Climate Action Council scoping plans
- > Timeline



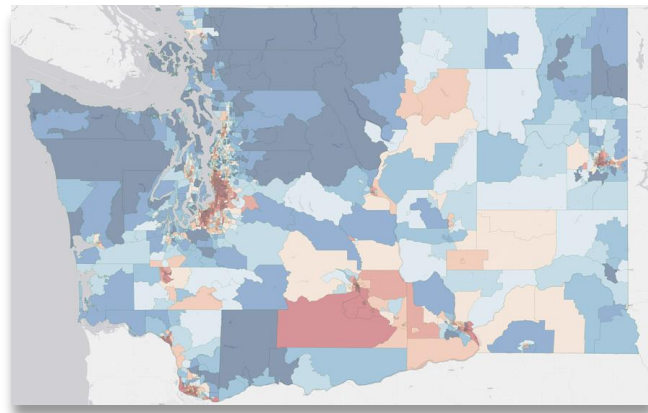
# Meet Sameer & Climate Action Council Recs



## Meet Sameer Ranade: Climate Justice Poet and Environmental and Social Justice Advocate!



Excited to build on the WA health disparities mapping experience in NY!



Feel free to contact Sameer anytime about climate justice and mapping-related concerns, thoughts, or questions!

Work Email: [Sameer.Ranade@nyserda.ny.gov](mailto:Sameer.Ranade@nyserda.ny.gov)

Work Cell: 347-867-5508



Department of  
Environmental  
Conservation

# Advisory Panel Recommendations

Each Advisory Panel is making recommendations to CAC (8 panels)

CLCPA requests CJWG consultation on draft scoping plan; the recs are the draft scoping plan

CJWG will have the opportunity to offer feedback on the recommendations at the June 8 CAC meeting

The recommendations are extensive – If you tried to review them all it could take between 16-24 total hours per person, but we are working to highlight key parts for you and will be in touch soon on how best to share the information with you in a digestible manner well before June 8





# Timeline and What's Ahead



# What's Ahead

## Work Ahead

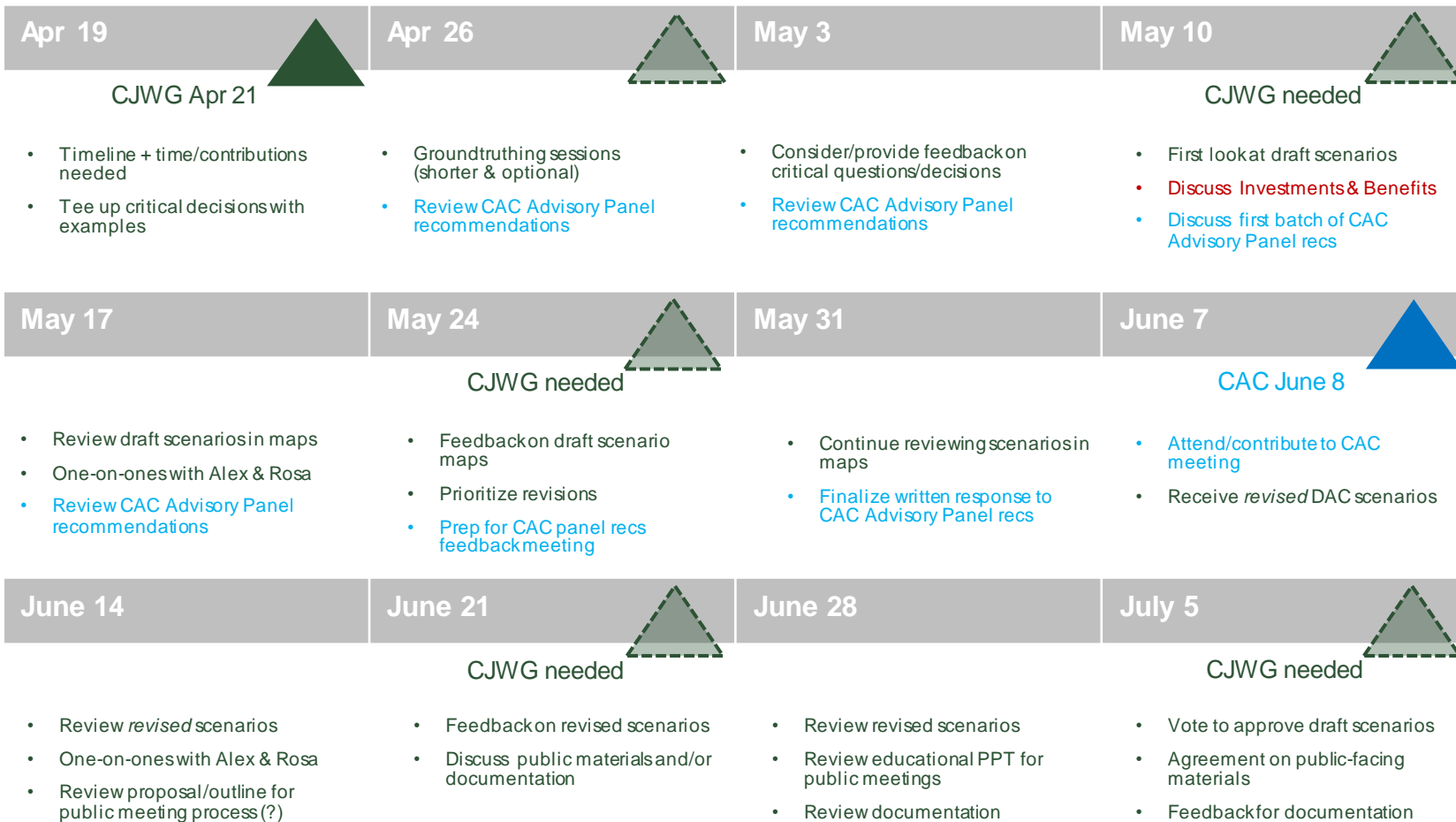
1. Groundtruthing list
2. Review draft scenario maps
3. Review revised scenarios
4. One-on-one meetings
5. Review public meeting materials
6. Review draft documentation

Also need time for:  
Investments & Benefits  
CAC scoping recommendations

## Decisions Ahead

1. Proportion of state to be DACs (e.g., 25%, or 30%, or more)
2. Distribution of DACs (regional equity)
3. Consensus on indicators (set that decide criteria)
4. Consensus on approach (how to combine the indicators)
5. Consensus on scenarios to post





# Next Steps

## What we're working on

Indicator reduction/selection (input from state & federal experts)

GIS analysis for missing indicators (Agency collaboration; GIS team)

Tableau interface

Evaluate scenarios (overlap; groundtruthing)

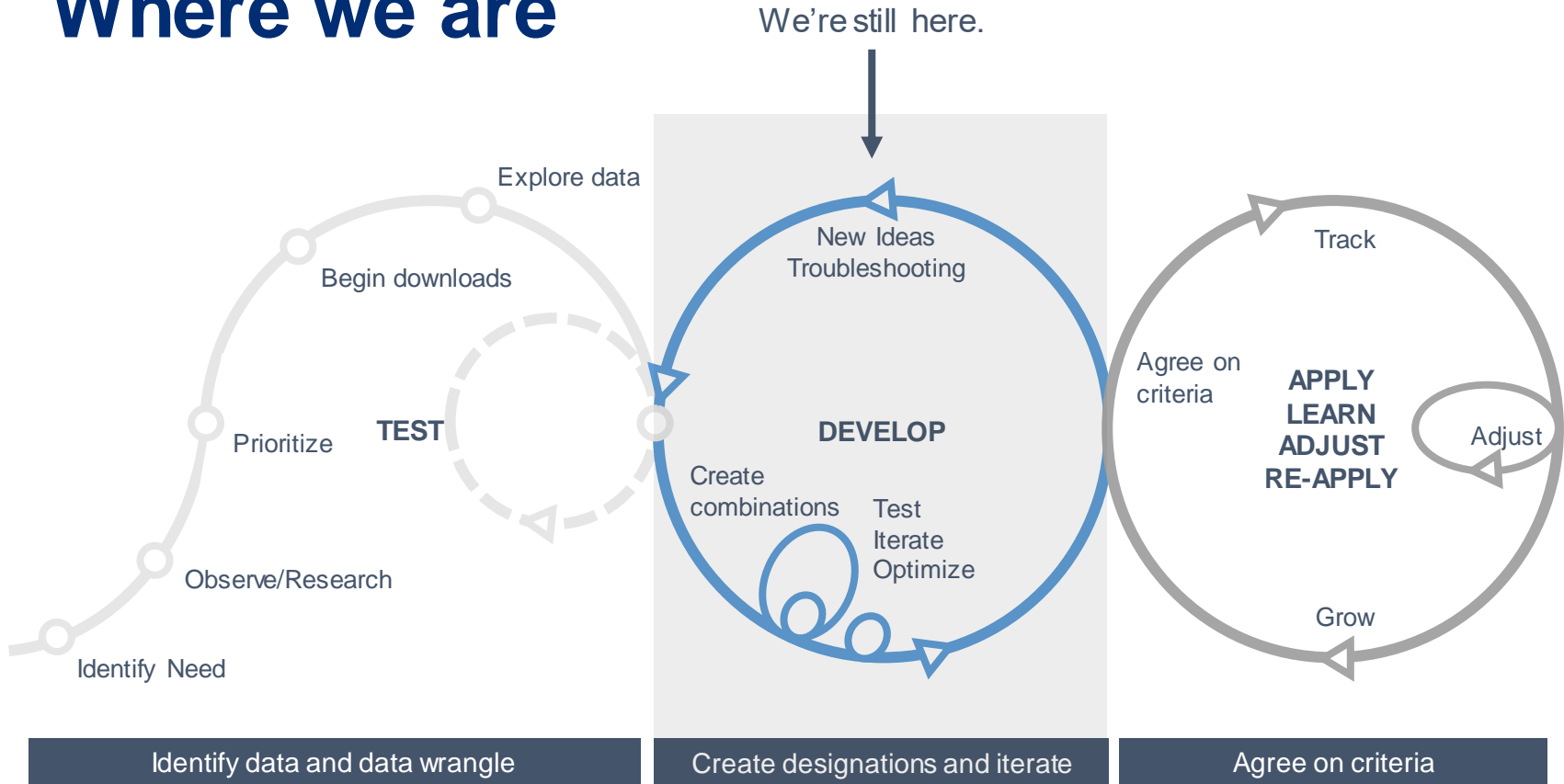
## What we need from you

Groundtruthing community list

Carve out time to review maps



# Where we are



# Working on two fronts

## Data and Indicators

1. Working on critical data pieces
  - environmental and climate risk indicators
2. Prioritizing critical indicators with experts (DEC, DOH, climate)

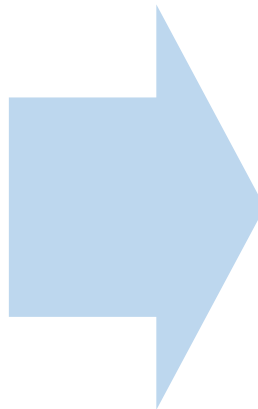
## Scoring and Designation

1. Considering scoring options:
  - Grouping, weighting, regional scoring
2. Comparing scenarios



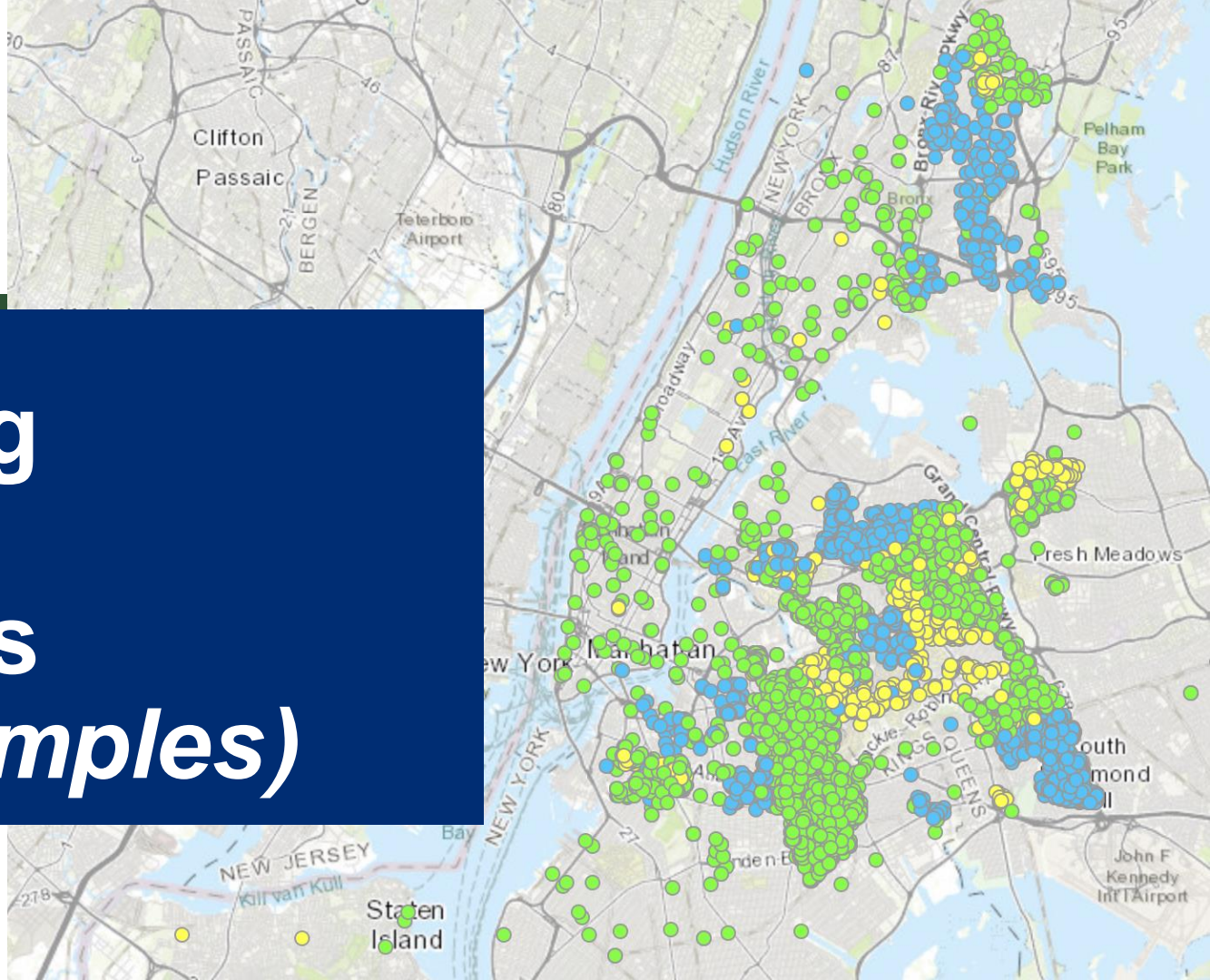
# Indicators we're still waiting for

1. **Climate:** Flood risk, storm surge, sea level rise (optional: extreme temperatures, vegetative cover)
2. **Health:** Premature death, low birthweight
3. **Environmental hazards:** Proximity to state permitted/regulated facilities (*various*)
4. **Other:** Distance/access to healthcare facilities



These will change  
the scenarios

# Upcoming Scoring Questions *(with examples)*





# Reference Slides: Questions that will come up as you start looking at mapping



<https://i.gifer.com/EcFk.gif>

← trying to get ahead of documentation

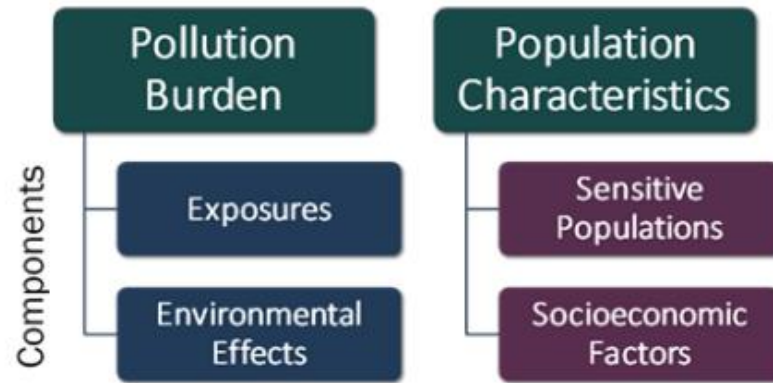


Department of  
Environmental  
Conservation

# Combining data is a stepped process

We can't just add all the indicators we select together.

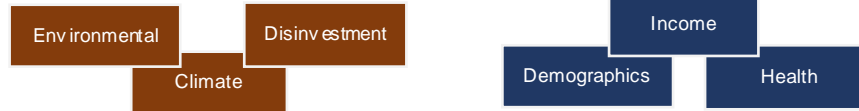
We need to group indicators that “speak to” a specific concept together.



*^ How CalEnviroScreen groups things together  
(our groups will likely differ)*

# Combining Data

Group data\*



← specific groups TBD pending indicator selection

Combine Groups

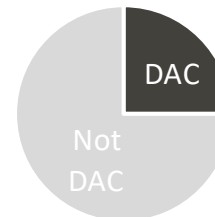


Calculate Overall Score



← This could be statewide, regional or both

Designate DACs based on their relative score

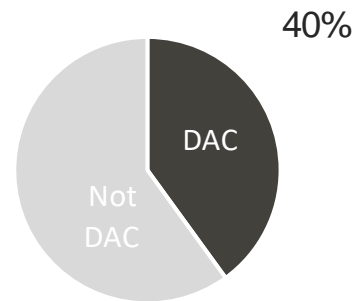
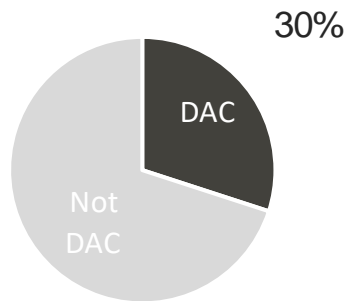
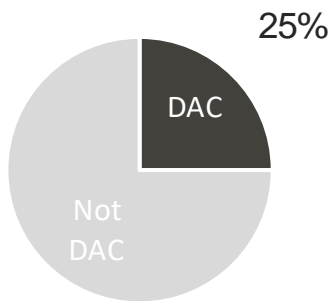


# Critical Question for CJWG: Share of DACs

In general, what share of communities (census tracts) should be designated as DACs?

# Critical Question for CJWG: Share of DACs

In general, what share of communities (census tracts) should be designated as DACs?



Since scoring is **relative** (slide 34), there is no clear or objective line or formula where everyone above the line is a DAC and below the line is not.

We can show maps with different thresholds for you to compare.

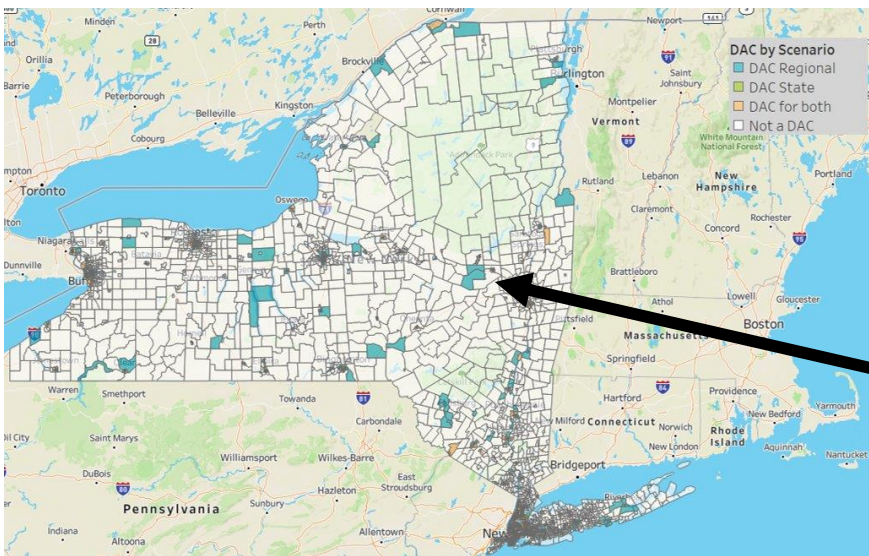


# Critical Question for CJWG: Regional Parity

What does regional parity look like for you? What if NYC has more DACs than other areas? Is that okay or should we aim to adjust things?

# Critical Question for CJWG: Regional Parity

What does regional parity look like for you? What if NYC has more DACs than other areas? Is that okay or should we aim to adjust things?



*Illustrative Scenario –  
incomplete data!*

If we only calculate scores statewide (e.g., compare every community to the whole state), NYC will likely have far more tracts with high scores

Blue areas emerge as potential DACs if we look at NYC scores separately from Rest-of-State

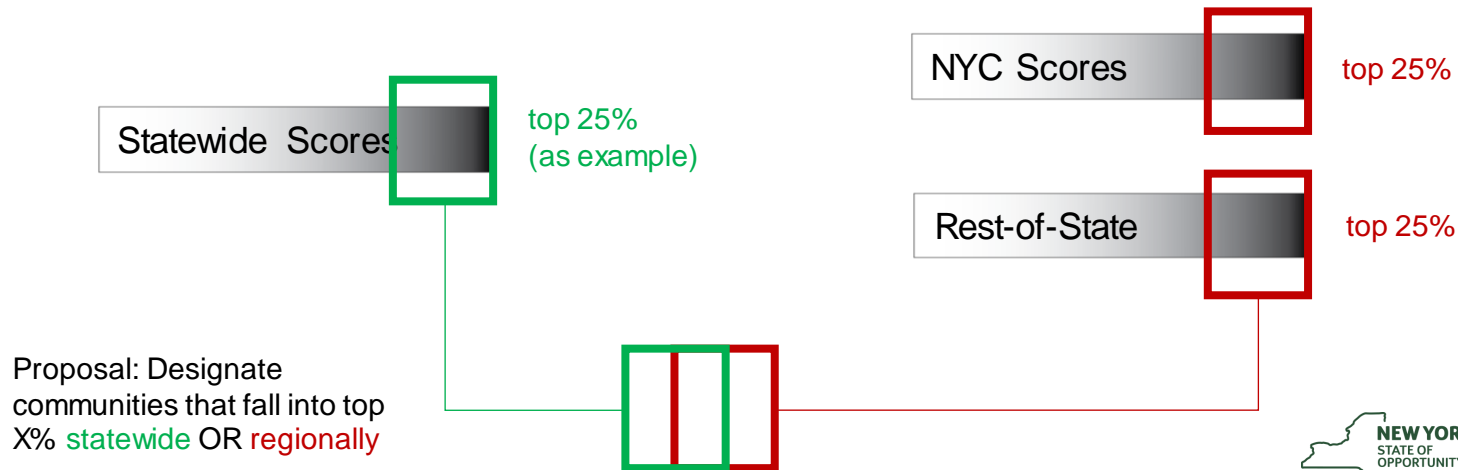
# Critical Question for CJWG: Regional Parity

## Statewide Score

Look at how each community ranks (on all of the data) within the **entire** state

## Regional Scores

Look at how each community ranks (on all of the data) in NYC separately from the rest of the state (to allow more Upstate and rural areas to be DACs)





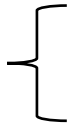
# Example of Regional Results

Besides looking at maps, how proportional is the distribution of DACs?

Illustrative Scenario –  
incomplete data!

|                          | Percent of <b>All</b><br>Census Tracts | Percent of <b>DACs</b><br>(32% of state) |
|--------------------------|--|--|
| New York City            | 44%                                    | 57%                                      |
| Long Island              | 12.5%                                  | 6.0%                                     |
| Mid-Hudson               | 11.0%                                  | 9.1%                                     |
| Western NY               | 7.4%                                   | 7.9%                                     |
| Finger Lakes             | 6.3%                                   | 5.0%                                     |
| Capital Region           | 5.8%                                   | 4.2%                                     |
| Central NY               | 4.5%                                   | 4.3%                                     |
| Southern Tier            | 3.5%                                   | 2.7%                                     |
| Mohawk Valley            | 3.0%                                   | 2.8%                                     |
| North Country            | 2.2%                                   | 1.3%                                     |
| Average of Median Income | \$ 73,913                              | \$ 51,828                                |
| Average % BIPOC          | 45%                                    | 69%                                      |
| Pct that are HUD QCTs    | 22%                                    | 67%                                      |

Most rural  
regions



In this scenario, Western NY makes up 7.9% of DACs, while it's 7.4% of all census tracts



Department of  
Environmental  
Conservation

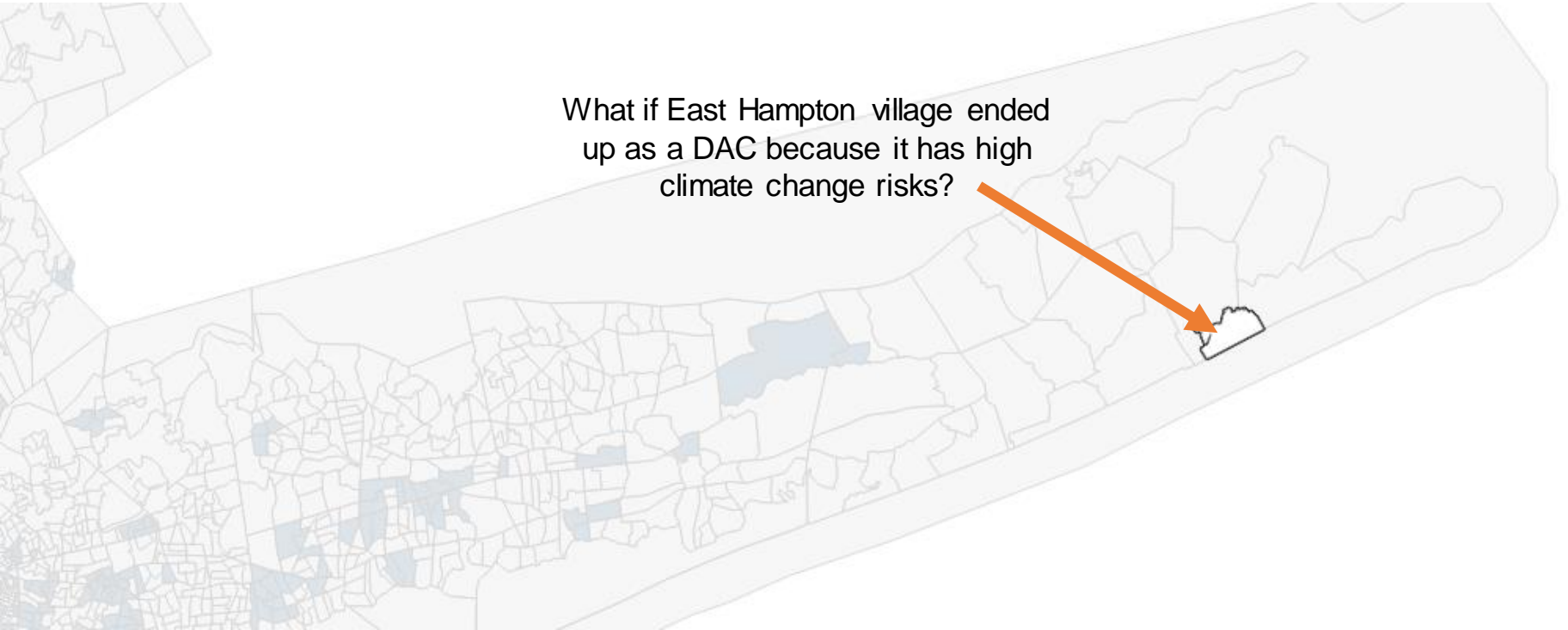
# Critical Question for CJWG: “Super” Criteria

Should any criteria (like low income) be a final or “super” criteria or filter?



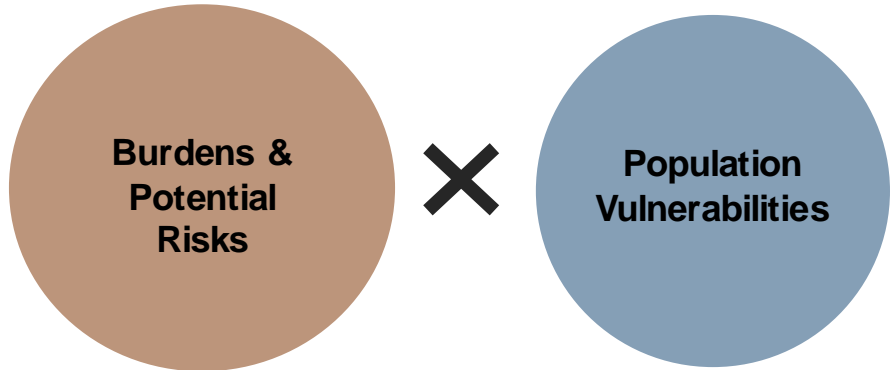
# ***What if non-low-income communities score as DACs based on burdens and vulnerabilities?***

What if East Hampton village ended up as a DAC because it has high climate change risks?



# What if non-low-income communities score as DACs based on burdens and vulnerabilities?

It's possible that some communities that score high on the combined index may not be low income or high BIPOC...



...Should any criteria (like low income) be a final or **“super”** criteria or filter?

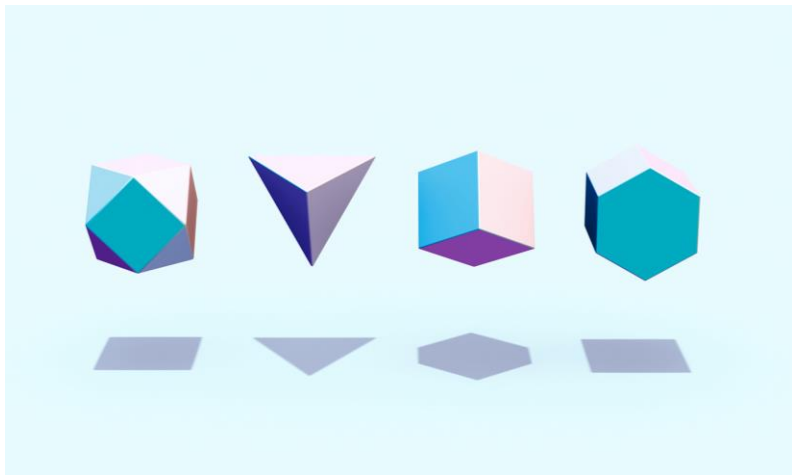


# Evaluating Scenarios and Groundtruthing



# Evaluating Scenarios

How can we tell if one scenario is a better fit?



Groundtruthing (alignment) against...

...Your selected tracts

...Other definitions (e.g., BOAs, historical redlining?)

Regional distribution: What seems equitable?

Key criteria: Low income, BIPOC....?



Department of  
Environmental  
Conservation

# Your list of DACs & Not DACs

Still needed for groundtruthing!

Go to [https://public.tableau.com/views/NYCensustracts/NYMap?:language=en&:display\\_count=y&:origin=viz\\_share\\_link](https://public.tableau.com/views/NYCensustracts/NYMap?:language=en&:display_count=y&:origin=viz_share_link)

Hover over the map to get the census tract name – it's a long number

Write down the following:

- Tracts you think should be DACs
- Tracts you think should NOT be DACs
- Reason why it's a DAC or not
- Send email to Rosa and Alex with your thoughts



# Similarities to CalEnviroScreen

We have learned (and are using/adapting) a lot from CalEnviroScreen and California's DAC definition

| Approach                               | Similarities  |
|--|---|
| Relative Scoring                       | Relative scoring approach – Use percentiles of underlying data; calculate overall score on multiple variables                         |
| Multiple Criteria                      | Evaluate multiple pollution sources, burdens and stressors; consider population characteristics and public health                     |
| Combining Burdens with Vulnerabilities | Develop overall score for each of two components, and multiply scores   |
| Designation of DACs                    | Uses relative scoring results to identify communities with relatively higher scores on multiple indicators; designates top X% as DACs |
| Iterative improvements                 | California has had (and we assume) several improvements and iterations  |





# Differences with CalEnviroScreen

We are using/adapting a lot from CalEnviroScreen and California's DAC definition, **but there are some key differences**

## CalEnviroScreen

Developed as **screening tool** to help identify (but not designate) communities

Focused on pollution exposure & population characteristics more sensitive to pollution

Does not include race/ethnicity

All scores and designation are relative to statewide levels

## New York Definition

We need to **identify and designate** communities as “disadvantaged” for the purpose of directing investments and benefits

Expands beyond environmental indicators to consider (a) historical discrimination and disinvestment, and (b) climate risks and vulnerabilities

Includes race/ethnicity and considers structural racism

Considering separate scores for NYC vs. rest of state (to allow more rural communities to designated)

